

Being a baby in a toxic World





In 1930 - around 1 million tons of
chemicals per year – globally

Today - around 500 million tons
of chemicals per year - globally

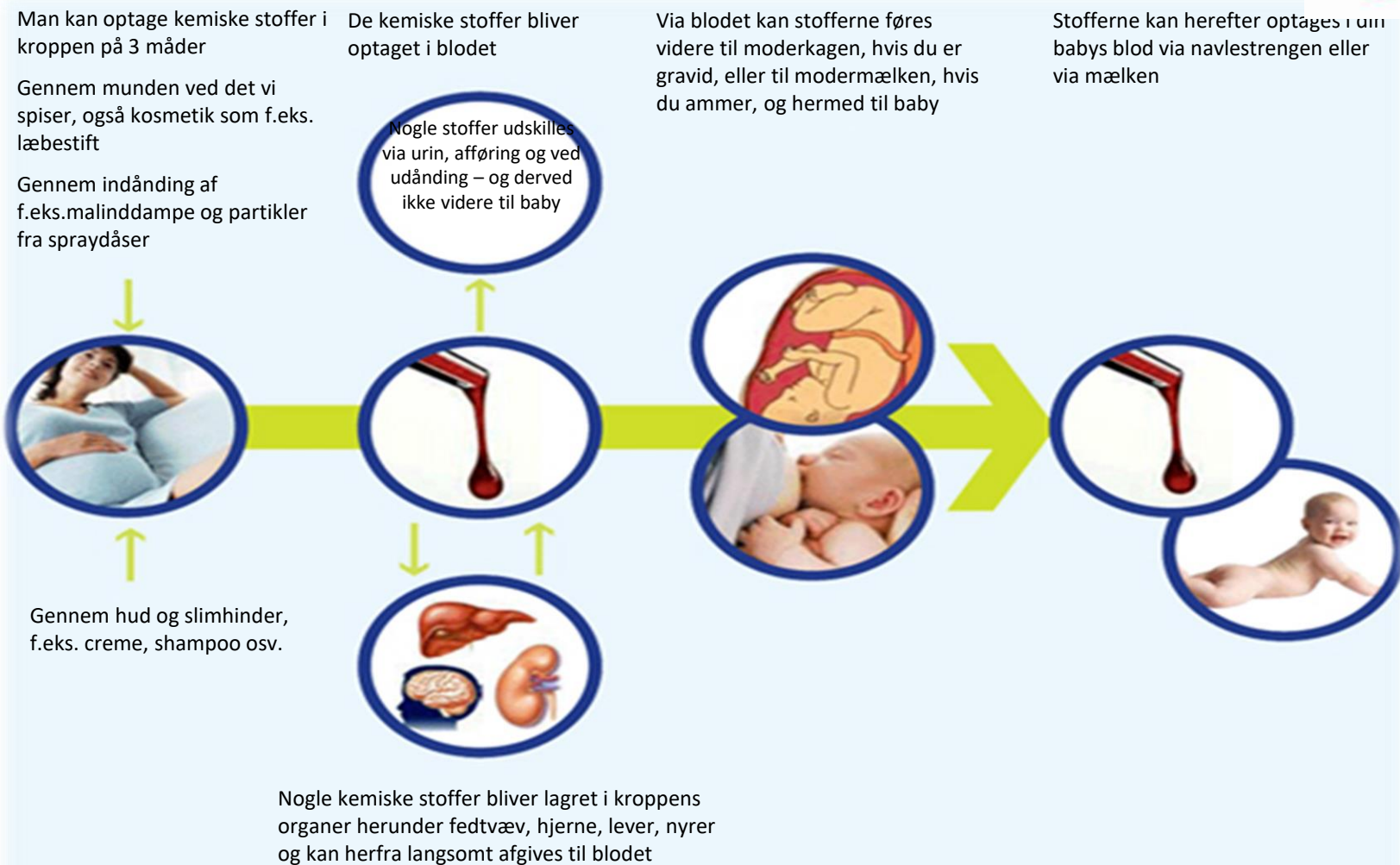


- Care products
- Textiles
- Toys
- The indoor climate





How do the chemicals enter the body?



Care products



- Preservatives
- Fragrances
- Dyes



Suspected endocrine disruptors in cosmetics

BHT eller Butylated Hydroxytoluene
Cyclopentasiloxane
Cyclomethicone (kan indeholde cyclopentasiloxane)
Ethylhexyl Methoxycinnamate
Ethylparaben
Methylparaben
Propylparaben
Butylparaben
Resorcinol
Benzophenone-1
Benzophenone-3
Butylphenyl metylpropional
Salicylic acid

Benzophenone-2
BHA eller Tert.-Butylhydroxyanisole
Cyclotetrasiloxane
Diethyl Phthalate (DEP)
Triclosan
Triphenyl phosphate
Octoxynol



The cocktail effect makes chemicals more toxic



Mixing different chemicals might alter their effect

The 26 documented allergenic fragrances



- ✓ Alpha isomethylionon
- ✓ Amylcinnamat
- ✓ Amylcinnamylalcohol
- ✓ Anisealcohol
- ✓ Benzylalcohol
- ✓ Benzylbenzoat
- ✓ Benzylcinnamat
- ✓ Benzylsalicylat
- ✓ Butylphenylmethylpropional
- ✓ Cinnamal
- ✓ Cinnamylalcohol
- ✓ Citral
- ✓ Citronellol

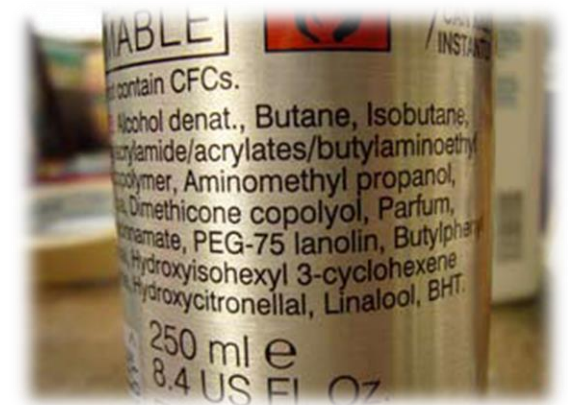
- ✓ Coumarin
- ✓ Evernia furfuraceae (træmos-ekstrakt)
- ✓ Evernia prunastri (egemosekstrakt)
- ✓ Eugenol
- ✓ Farnesol
- ✓ Geraniol
- ✓ Hexylcinnamat
- ✓ Hydroxycitronellal
- ✓ Hydroxyisohexyl
3cyclohexenecarboxaldehyd
- ✓ Isoeugenol
- ✓ Linalool
- ✓ Limonene
- ✓ Methyl 2-octynoat



Good to know when reading the content list



- The ingredients are in order of what is most of in the product
- Perfume is referred to as perfume, fragrance or aroma
- Plants and parts of plants are indicated by their botanical names in Latin
- Each substance has only one real name and must not be hidden under another name or spelling





Clothes and textiles



- Buy recycled clothes
- Look for the eco-labels
- Buy textiles without plastic printing
- Always wash before use



Toys



- Demand Swan-labeled toys
- Buy good quality
- Use your nose
- Choose hard plastic
- Buy toys of wood
- Wash all new toys before use
- Avoid soft plastic toys from before 2007



These are not toys





The indoor climate

Scented candles

Air fresheners

Electronics

Aerosols

Leads

Plastic

Smoking

New furniture

Clean and air out



The most important tips



- Always look for the Swan-label
- Wash all new stuff for your baby
- Ventilate your house properly twice a day
- Use your common sense – what do you need for a baby?

Clean and air out





Thank you for listening

Lene Midtgaard, consultant and journalist

sustainable change · everyday chemicals · climate change

lene@bewild.dk, www.bewild.dk

A large teal logo for 'bE wILD' centered at the bottom of the slide. The letters 'bE' are in a bold, serif font, while 'wILD' is in a lighter, lowercase serif font. A small, hand-drawn butterfly icon is positioned above the 'i' in 'wILD'.

bE wILD

